



**SUNTRONIC CONTROL**



# PRODUCT CATALOG

---



# Table Of Contents



**01**

**About Us**

**02**

**Best Selling**

**03**

**Products Overview**

**04**

**Products Description**

**05**

**Contact Us**

# ABOUT US

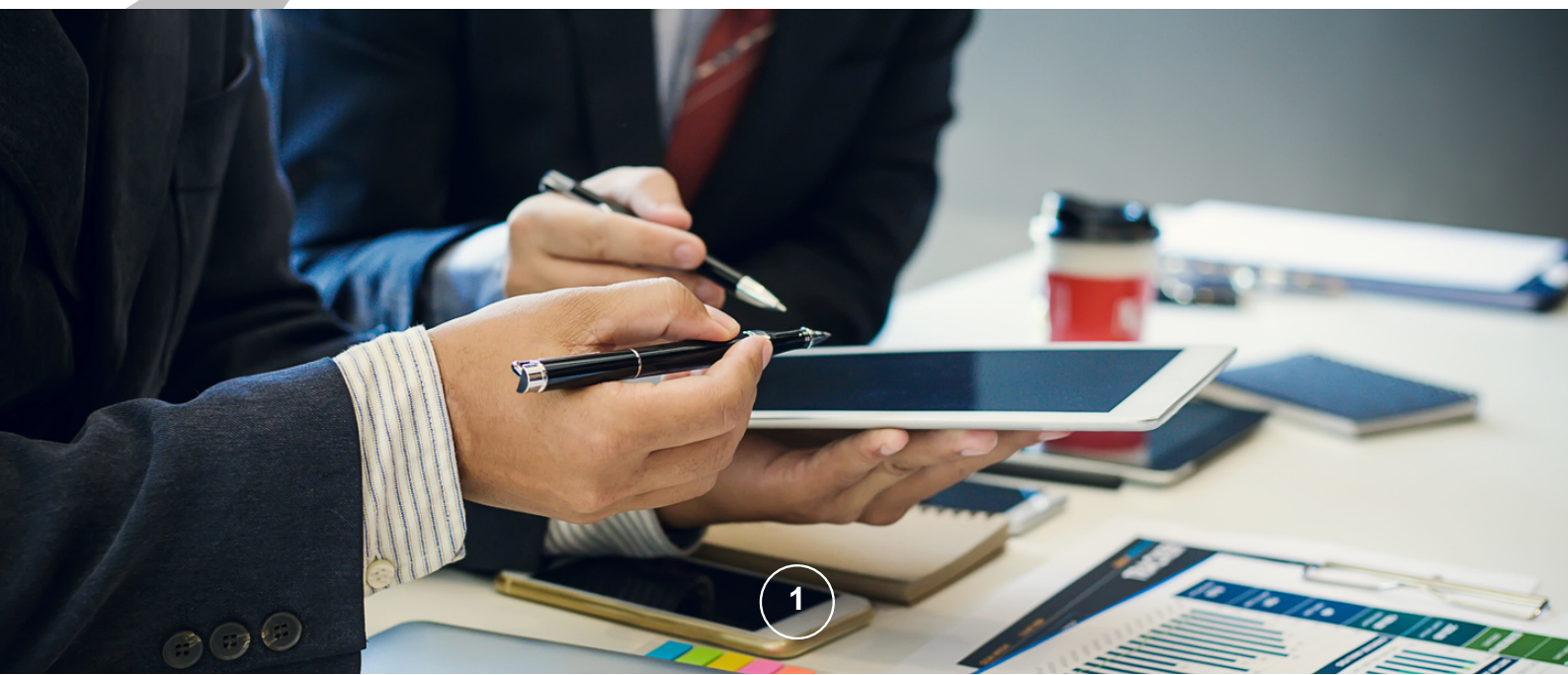
---

**SUNTRONIC CONTROL** has been established in the year **1992**, we are one of the professionally managed organizations, engaged in manufacture and export of a technically advanced range of **industrial automation products**, Our range incorporates products such as **Manual Induction Cap Sealing Machine**, Online Automatic Air Cooled Induction Cap Sealing Machine "**PRIME II**, **Bottle Labeling Controller**, **Variable frequency drives**, **AC servo motors and Drives**, **Programmable Logic Controllers (PLC)**, **Human Machine Interface (HMI/MMI)**, **Stepper Motor and Drive**, **Stepper & Servo Drive Controller**, **PID Temperature controller's**, and also Manufacture DC Motor Speed Control Thyristor Drive, Micro Processor Vibrator Controller, Micro processor controlled instrument like Stepper Motor Control System, Counters, Static Pot and AC or DC Drive Synchronies System, AC or DC Drive Tension Control System, and UV LED Ink curing, UV LED glue Curing, UV exposure, offset, flexo, screen print, at most affordable price etc.

We have a profound infrastructure, which aids in the manufacture of a technically advance range of industrial automation systems. Equipped with latest manufacturing facilities and incorporating the sophisticated technology.

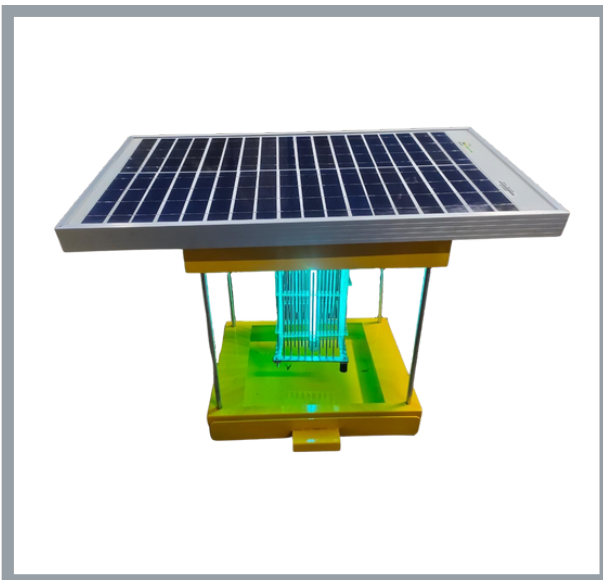
We are a quality conscious organization, which is committed to offer qualitative range to our clients spread all across the globe. The stringent quality checks of our range starts from the procurement of raw materials and goes till the time the products is finally installed at the final destination.

Through our wide range of industrial automation products, we have been able to cater the requirements of diverse industries at industry leading prices. Our efficient products range and reliable services have earned us accolades from our clients spread all across the globe. We believe in rendering our customers with superior services with in stipulated frame of time.



# BEST SELLER PRODUCT

Revolutionize Your Operations with Our Best-Selling Solutions: Enhance packaging efficiency with the Automatic Induction Cap Sealing Machine, ensuring secure seals with automated precision. Elevate user experience with the Smart TFT LCD Configurable Display, offering customizable control interfaces through cutting-edge display technology. Optimize material flow and screening processes with the Vibrator Controller, bringing controlled vibratory precision to industrial operations. Lastly, the Solar Insect Killer, a groundbreaking solution that combines eco-friendly technology with efficient pest control, creating a safer environment for your operations. Choose Suntronic Control for innovative solutions, reliability, and precision, setting new standards in industrial technology.



# PRODUCTS OVERVIEW

---

---

## CAP SEALING MACHINE

Introducing our state-of-the-art automatic cap sealing machine, a game-changer in the world of packaging solutions.



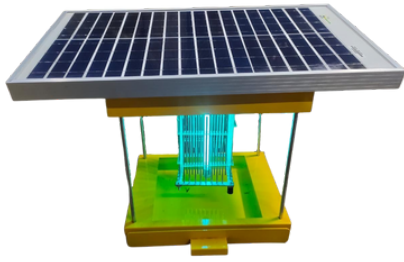
## SMART TFT DISPLAY

Introducing our Touch Screen display , a versatile and powerful solution designed to meet the unique requirements of your industrial applications.

## VIBRATOR CONTROLLER

Suntronic Control's Vibrator Controller: Thyristorised for precise voltage control, these controllers vary vibration intensity for adjustable feed rates.





## SOLAR INSECT KILLER

Experience a pest-free outdoor environment with our Solar Insect Killer.

---

## STEPPER CONTROLLER

Elevate your automation and precision control projects with our cutting-edge Stepper Motor Controller.



---

## COUNTER AND TIMER

Suntronic Control introduces a dynamic Timer/Counter duo, offering precision in timing and seamless event counting.

---

## CAP SEALING MACHINE

Effortless sealing meets portability with Suntronic Control's Manual Induction Cap Sealing Machine.





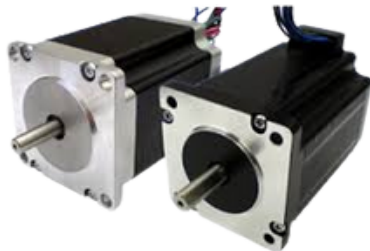
## SERVO CONTROLLER

Suntronic Control's Servo Controller stands at the forefront of precision engineering, seamlessly integrating with servo drives and motors.

---

## STEPPER & SERVO DRIVE

Introducing our Stepper drives range of models which are essential component in stepper motor control systems.



## STEPPER & SERVO MOTOR

Elevate your product performance with Suntronic's quality-driven motor technology.

---

## SMPS

Revolutionize Energy Solutions with Suntronic Control: Introducing SMPS for Peak Performance and Sustainable Power Excellence!



# 1.

## AUTOMATIC AIR COOLED INDUCTION CAP SEALING MACHINE

---



- 
- **Efficient air-cooled inverter** and sealing coil design, Easily Movable Advanced technology provides high control of the sealing
  - Caps with diameters from **20-130 mm** may be sealed
  - Sealing speed: **50-60 container/minute**
  - Standard **300 mm Can seal** PET/HDPE/PP/LDPE/PVC container
  - User friendly **Fast, easy set-up**
  - Continuous Use: **built to last** Safe, reliable, compact and lightweight
  - **Micro Processor Controlled** 100% digital variable output operation at ambient temperature
  - **Save Power:** Latest Solid State semiconductor technology ensures reliability.
  - It has **more than 80% power conversion efficiency**, so less power is required.
  - No tuning, no tools, just plug it into **230V Single phase mains power supply** and seal, Safe, Reliable & Compact. **PRIME II** can be mounted on to your existing conveyor belt.
  - Safety/Protection Alarms: Built in **protection circuitry** for Over Current/Over Voltage/Over Temperature. All this comes at **NO EXTRA COST**

Note:- Feel Free to **Contact us** to get more Information regarding the product.



# 2.

## SMART TFT DISPLAY

---



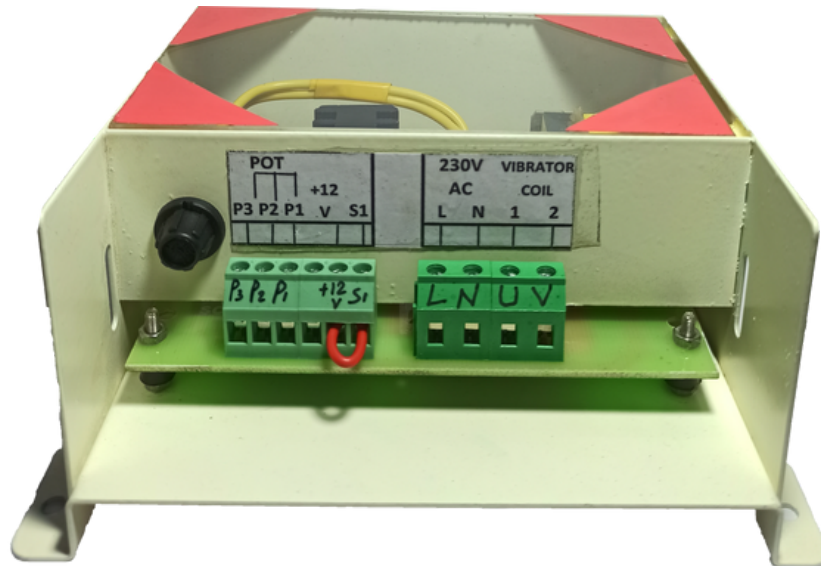
- 
- **Wide Operating Voltage:** Versatile compatibility with a wide range of operating voltages, ensuring flexibility and adaptability to diverse industrial power systems.
  - **Stable and Reliable Resistive Touch:** The resistive touch technology provides a stable and reliable interface, allowing precise and responsive touch interactions for seamless control and navigation.
  - **High-Resolution Display:** Enhancing visibility and providing a superior user experience in monitoring and controlling industrial processes.
  - **User-Friendly Customization:** Intuitive customization options that empower users to tailor the interface according to specific operational needs, ensuring a personalized and efficient user experience.
  - **Industrial Durability:** Robust construction designed to withstand harsh industrial environments, featuring resistance to dust, moisture, and temperature variations, ensuring reliable performance in challenging conditions.
  - **Seamless Integration:** Designed for easy integration into existing systems, with a compact form factor and versatile mounting options, facilitating a hassle-free incorporation into your industrial setup.

Note:- Feel Free to **Contact us** to get more Information regarding the product.

# 3.

## VIBRATOR CONTROLLER

---

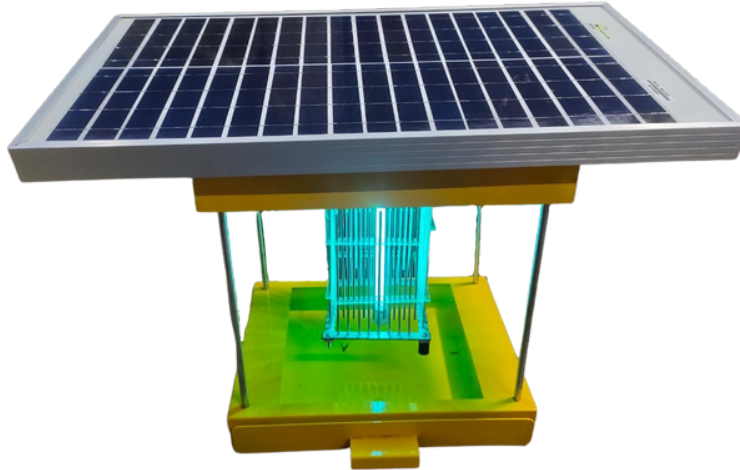


- **Current Range Flexibility:** Choose from a comprehensive current range, starting from 2Amp and reaching up to 20Amp, providing you with the flexibility to align with varying power demands in your applications.
- **Seamless PLC Integration:** Our controller is designed with the future in mind. It comes equipped with the capability to seamlessly integrate with Programmable Logic Controllers (PLC), enhancing automation possibilities and allowing for streamlined control within your industrial setup.
- **Fine and Coarse Setting Options:** Modify your vibratory processes with precision. The Suntronic Control Variable Voltage Vibrator Controller provides both fine and coarse setting options, empowering you to optimize and fine-tune vibration parameters according to your specific application requirements.
- **Integration with Other Process Controllers:** This controller is not just standalone – it's part of a comprehensive industrial ecosystem. It seamlessly integrates with other process controllers, offering a harmonious synchronization within your control system for enhanced operational efficiency.
- **Soft Start/Stop and Delayed On/Off:** Prioritize equipment longevity and smooth operation with the incorporated soft start/stop feature. Additionally, benefit from the convenience of delayed On/Off functionality, ensuring a gradual and controlled transition for your vibratory equipment.

# 4.

## SOLAR INSECT KILLER

---



- 
- **Solar-Powered:** Harness the energy of the sun to power this insect killer, making it both eco-friendly and cost-effective.
  - **Efficient UV LED Light:** Emitting a special UV light, our device attracts insects, drawing them away from you and into the trap.
  - **Insect Zapper:** Equipped with a high-voltage grid, it quickly and safely eliminates insects on contact, providing instant relief.
  - **Weather-Resistant Design:** The Solar Insect Killer is built to withstand outdoor conditions. Rain or shine, it continues to protect your space.
  - **Large Coverage Area:** With an effective range of [provide coverage area], it's ideal for patios, gardens, campsites, and outdoor dining areas.
  - **No Chemicals or Harmful Emissions:** Our insect killer uses no harmful chemicals, making it safe for the environment and your family.
  - **Auto On/Off:** The built-in light sensor activates the device at dusk and deactivates it at dawn, ensuring it operates efficiently and conserves energy.
  - **Easy Installation**
  - **Low Maintenance:** The removable insect collection tray makes cleanup a breeze, ensuring minimal maintenance.
  - **Silent Operation:** Enjoy your outdoor space without the annoying hum of traditional bug zappers.

# 5.

## STEPPER CONTROLLER

---



- 
- **Alphanumeric LCD Display:** A 20x4 alphanumeric LCD provides a clear display of the status and settings, ensuring easy readability.
  - **Intuitive User Interface:** Easy-to-understand menus and smooth navigation make the controller user-friendly and accessible.
  - **Activity LEDs:** Built-in LEDs offer a quick and visual analysis of the controller's activity, enhancing user monitoring.
  - **Output Signals:** Four general-purpose output signals enable the driving of external relays or cascading with other controllers for expanded functionality.
  - **High Pulse Rate:** Capable of a high pulse rate of 50 KHz, allowing for microstepping usage and maintaining high motor speed.
  - **Adjustable Maximum Motor Speed:** Users have the flexibility to set and adjust the maximum speed of the motor according to their specific requirements.
  - **Opto-Isolated Pulse Inputs:** Three opto-isolated pulse inputs provide convenient connections to external signals for precise control.
  - **Cut to Length Mode:** Supports a "Cut to Length" mode for precise and accurate positioning.
  - **Configurable Gear Ratio and Microstep Settings:** Users can configure gear ratios and microstep settings to suit their specific application needs.

Note:- Feel Free to **Contact us** to get more Information regarding the product.

# 6.

## TIMER AND COUNTER

---



- 
- **Customizable Timing:** Set precise timers in seconds, minutes, or hours, providing flexibility for a wide range of applications.
  - **Dual Relay Functionality:** Operate two independent relays triggered by individual countdown timers, enhancing versatility for varied industrial processes.
  - **Responsive Counting:** The Counter component detects events and counts up seamlessly, offering real-time monitoring capabilities.
  - **Multi-Functional Options:** Explore additional functionalities modified to specific needs, adding a layer of customization to your timing and counting requirements.
  - **Industrial-Grade Reliability:** Engineered for reliability, Suntronic Control's Timer/Counter is designed to withstand the demands of industrial environments.

Note:- Feel Free to [Contact us](#) to get more Information regarding the product.

# 7.

## MANUAL CAP SEALING MACHINE

---



- **Compact and Portable Design:** The Suntronic Control Manual Cap Sealing Machine is designed with a compact form factor, ensuring ease of use and portability. Its ergonomic design enhances user convenience while maintaining efficient sealing capabilities.
- **Effortless Operation:** This sealing machine offers a user-friendly interface, allowing for straightforward operation. With a simple trigger mechanism and adjustable timer settings, users can easily achieve precise sealing for various container sizes.
- **Versatile Sealing Range:** Experience the flexibility of sealing a wide range of closures, from the smallest to wide-mouth containers. The machine accommodates closures with diameters ranging from 10 mm to 100 mm or 10 mm to 130 mm, providing adaptability to diverse packaging needs.
- **Adaptable for Different Materials:** Suited for both plastic and glass bottles, our Manual Cap Sealing Machine excels in inductive thermal sealing. Its non-contact inductive heating system ensures efficient sealing for non-metal bottles, enhancing versatility for different packaging materials.
- **Ideal for Laboratory and Start-Up Factories:** Best for laboratories and start-up factories, this manual induction sealer is perfect for those looking to boost productivity without the need for special power or water connections. It streamlines the sealing process for small to medium-scale operations.

# 8.

## SERVO CONTROLLER

---



- 
- **Feedback Sensor Integration:** Seamlessly incorporates a feedback sensor to measure the position, velocity, or torque of the mechanical system, ensuring real-time data for precise control.
  - **Intelligent Controller:** Employs a sophisticated controller that compares the feedback sensor's measurement with the desired value, generating an error signal for accurate adjustments.
  - **Efficient Actuation:** Utilizes a powerful actuator to convert the error signal into a control signal, driving the mechanical system with efficiency and responsiveness.
  - **Robust Power Amplification:** Features a robust power amplifier, amplifying the control signal to levels necessary for driving the actuator, ensuring optimal performance.
  - **Versatile Speed and Torque Control:** Offers versatile speed and torque control capabilities, allowing adaptability to diverse mechanical system requirements.
  - **Precision Motion Control:** Achieves high-precision control over the position, velocity, or torque of the mechanical system, delivering accuracy in motion control operations.

Note:- Feel Free to [Contact us](#) to get more Information regarding the product.

# 9.

## STEPPER AND SERVO DRIVE



- **Operating Voltage:** Support for a range of operating voltages, both AC and DC, providing compatibility with diverse power sources.
- **Motor Compatibility:** Designed to work with Nema 14, 17, 23, 34, and 42 stepper motor sizes, offering versatility for different torque and size requirements.
- **Phases:** Stepper drives can be 2-phase or 3-phase, influencing the motor's performance and smoothness of motion.
- **Microstepping:** Stepper drives often incorporate microstepping technology, enabling smoother motion by subdividing each step into smaller increments. This reduces vibration and improves accuracy.
- **Step and Direction Control:** Stepper drives commonly use a step and direction control interface, where each pulse (step) corresponds to a movement and the direction signal determines the rotation direction. This simplifies integration with various control systems.
- **Closed-Loop Control (Optional):** Some stepper drives support closed-loop control systems, where feedback from encoders or sensors is used to ensure accurate positioning. This enhances performance, especially in applications where external forces may impact the motor's movement.

Note:- Feel Free to **Contact us** to get more Information regarding the product.



# 10.

## STEPPER AND SERVO MOTOR

---



- 
- **Precision Performance:** stepper and servo motors ensure precise motion control, meeting the demands of applications requiring accurate positioning.
  - **Adaptive Technology:** It leverage's advanced technologies, adapting to dynamic operational requirements for enhanced efficiency in diverse industrial settings.
  - **Reliable Torque Delivery:** Provides reliable torque output, guaranteeing consistent performance in high-demand scenarios, such as robotics and CNC machinery.
  - **Intelligent Feedback Systems:** With integrated intelligent feedback mechanisms, it offer real-time data for precise monitoring and control, ensuring optimal functionality.
  - **Compact and Durable Design:** It is designed to be compact without compromising durability, allowing for seamless integration into space-constrained environments while maintaining robust performance.
  - **Energy Efficiency:** We prioritizes energy efficiency in motors, contributing to sustainable operations and reducing overall power consumption.
  - **User-Friendly Interface:** These motors feature user-friendly interfaces, making them easily adaptable to various systems and facilitating a streamlined integration process for your specific application needs.

Note:- Feel Free to **Contact us** to get more Information regarding the product.

# 11.

## SWITCHED MODE POWER SUPPLY

---



- **Efficient Power Conversion:** SMPS boasts high-efficiency power conversion, optimizing energy usage and reducing overall operational costs.
- **Wide Input Voltage Range:** It accommodates a broad input voltage range, enhancing adaptability to fluctuating power sources and providing stability in varied operating conditions.
- **Advanced Protection Mechanisms:** Equipped with advanced protection features, these SMPS units guard against overcurrent, overvoltage, and overheating, ensuring the longevity and reliability of your systems.
- **Smart Control and Monitoring:** The products offer intelligent control and monitoring capabilities, allowing users to manage and optimize power distribution with ease.
- **Silent Operation:** Designed for minimal acoustic impact, these SMPS units operate quietly, making them suitable for noise-sensitive environments and contributing to a more comfortable working atmosphere.
- **Compliance with Industry Standards:** It adheres to stringent industry standards, guaranteeing a high level of quality, safety, and performance, and ensuring peace of mind for our customers.

Note:- Feel Free to [Contact us](#) to get more Information regarding the product.

# CONTACT US

---

For inquiries, support, or to learn more about our innovative products, feel free to get in touch with us:



Suntronic Control -186, Pushpak Industrial Estate, Nika Tube Cross Rd, Compound, Phase I, Vatva GIDC, Ahmedabad, Gujarat 382445, India



[suntronicindia@yahoo.com](mailto:suntronicindia@yahoo.com)



+91 95126 93555



<https://www.suntroniccontrol.com/>



Click any above icon to visit us on social

Feel free to reach out to us, and our dedicated team will be delighted to assist you. Your satisfaction is our priority at Suntronic Control.

